

## Human ZCCHC12 activates AP-1 and CREB signaling as a transcriptional co-activator

Hong Li<sup>†</sup>, Qian Liu<sup>†</sup>, Xiang Hu<sup>†</sup>, Du Feng, Shuanglin Xiang, Zhicheng He, Xingwang Hu, Jianlin Zhou, Xiaofeng Ding, Chang Zhou, and Jian Zhang\*

Key Laboratory of Protein Chemistry and Developmental Biology of State Education Ministry of China, College of Life Science, Hunan Normal University, Changsha 410081, China

<sup>†</sup>These authors contributed equally to this work.

\*Correspondence author. Tel/Fax: +86-731-8872792; E-mail: zhangjian@hunnu.edu.cn

**Mouse zinc finger CCHC domain containing 12 gene (ZCCHC12) has been identified as a transcriptional co-activator of bone morphogenetic protein (BMP) signaling, and human ZCCHC12 was reported to be related to non-syndromic X-linked mental retardation (NS-XLMR). However, the details of how human ZCCHC12 involve in the NS-XLMR still remain unclear. In this study, we identified a novel nuclear localization signal (NLS) in the middle of human ZCCHC12 protein which is responsible for the nuclear localization. Multiple-tissue northern blot analysis indicated that ZCCHC12 is highly expressed in human brain. Furthermore, *in situ* hybridization showed that ZCCHC12 is specifically expressed in neuroepithelium of forebrain, midbrain, and diencephalon regions of mouse E10.5 embryos. Luciferase reporter assays demonstrated that ZCCHC12 enhanced the transcriptional activities of activator protein 1 (AP-1) and cAMP response element binding protein (CREB) as a co-activator. In conclusion, we identified a new NLS in ZCCHC12 and figured out that ZCCHC12 functions as a transcriptional co-activator of AP-1 and CREB.**

**Keywords** zinc finger protein; ZCCHC12; AP-1; CREB

Received: February 13, 2009 Accepted: March 27, 2009

### Introduction

Zinc finger proteins constitute the most abundant protein superfamily in eukaryotes. Their functions are extraordinarily diverse, including DNA recognition, RNA packaging, transcriptional activation, regulation of apoptosis,

protein folding and assembly, and lipid binding [1]. Up to now, at least 20 different classes of zinc finger motifs have been identified. They differ in the number of bound zinc ions, and in the identity and space of the ligating amino acids [2]. The most clearly identified zinc finger motif is C2H2 type zinc finger, and a lot of C2H2 zinc finger containing proteins such as Zfp191 can bind to specific DNA sequences [3]. Another zinc finger motif, CX2CX4HX4C (CCHC zinc finger, X can be any amino acid), has single-strand nucleic acid binding activity, which is mostly present in retroviral gag proteins (nucleocapsid) and essential for RNA binding, genomic packaging, and infectivity of retrovirus [4–7]. Many other eukaryotic proteins are also found to function through CCHC zinc finger mediated DNA binding and protein–protein interactions. For example, CNBP (CCHC-type zinc finger, nucleic acid binding protein) specifically binds to sterol regulatory element (SRE) to regulate the transcription of downstream target genes [8]; ZCCHC11 interacts with TIFA (TRAF-interacting protein with a Forkhead-associated domain) and suppresses TRAF6-dependent NF- $\kappa$ B activation during LPS treatment [9]; ZCCHC9 binds to NF- $\kappa$ B promoter and suppresses MAPK signal pathway [10]; and ZCCHC8 interacts with SKIV2L2 and RBM7 to involve in RNA processing/degradation [11]. In brief, eukaryotic CCHC zinc finger proteins have multiple functions such as transcription regulation and RNA processing.

Mouse ZCCHC12, also named as Smad-interacting zinc finger protein 1 (Sizn1), was recently identified as a positive modulator of dorsal–ventral patterning in forebrain during embryogenesis. It was a transcriptional co-activator of bone morphogenetic protein (BMP) signaling, encoding a 402-amino acid protein with an

N-terminal paraneoplastic antigen (MA)-homologous region, a single CCHC zinc finger motif, and a putative nuclear localization sequence [12]. Sequences of *ZCCHC12* from *Mus musculus*, *Homo sapiens*, *Rattus norvegicus*, *Bos taurus*, and *Equus caballus* have been reported in the NCBI database. Human *ZCCHC12* shares 74% identity with mouse *ZCCHC12*, and similarly locates on chromosome X. Four different sequence variants in human *ZCCHC12* were characterized in 11 individuals with non-syndromic X-linked mental retardation (NS-XLMR), implicating *ZCCHC12* as a novel candidate gene for XLMR [13].

The majority of NS-XLMR-related proteins can be categorized into three distinct pathways: (i) Rho GTPases pathway modulating neuronal differentiation and synaptic plasticity; (ii) Rab GTPases pathway regulating synaptic vesicle cycling; (iii) gene expression regulation through chromatin remodeling, gene transcription, and RNA splicing/export/degradation [14]. However, the details of how human *ZCCHC12* involves in the NS-XLMR still remain unclear. And it is still unknown whether *ZCCHC12* involves in the regulation of other major transcription factors. Activator protein 1 (AP-1) and cAMP response element binding protein (CREB) are two crucial and well-characterized transcription factors. AP-1 is important for gene regulation during central nervous system dysfunction and development [15], and CREB-dependent gene expression is critical for a variety of functions in the developing and mature nervous system [16]. As both CREB and AP-1 cooperate with BMP signaling [17,18], we speculate that *ZCCHC12* may affect their transcriptional activities.

In this study, we independently cloned the human *ZCCHC12* gene and analyzed its tissue expression pattern and subcellular localization. Human *ZCCHC12* contains a CCHC zinc finger motif at its C-terminal and two putative nuclear localization signals (NLSs); it showed punctate distribution in the nucleus and acted as a positive regulator of transcription factors CREB and AP-1. Furthermore, *ZCCHC12* is demonstrated to interact with c-Jun, which implicates that it may play the role of co-activator in transcription regulation through associating with CBP.

## Materials and Methods

### Plasmid constructions

The full-length human *ZCCHC12* (GenBank accession no. NM\_173798) was cloned from a human brain cDNA library (Invitrogen, Carlsbad, CA, USA) by RT-PCR

using *EcoRI* site containing forward primer and *KpnI* site containing reverse primer: forward, 5'-CCGAATTCGGATGGCTAGCATCATTGCAC-3'; reverse, 5'-GCGGTACCTTACAGTGGCTCAGAGAA GT-3'. The PCR products were ligated into pMD18-T vector (Takara, Dalian, China), and then subcloned into *EcoRI* and *KpnI* sites of pCMV-Myc vector (Clontech, Palo Alto, CA, USA). To generate probes for whole-mount *in situ* hybridization, the coding region of mouse *ZCCHC12* (NM\_028325) was amplified and inserted into *EcoRI* and *XhoI* sites of pBluescript II KS(-) (Stratagene, La Jolla, CA, USA).

Truncated human *ZCCHC12* (1-N, 1-C, 2-N, and 2-C) were amplified from full-length human *ZCCHC12* by PCR, and subcloned into *EcoRI* and *KpnI* sites of pCMV-Myc using previously described forward or reverse primers and the following primers: reverse primer of 1-N, 5'-GCGGTACCTCATTCCCTTACCATTCTG-3'; forward primer of 1-C, 5'-CCGAA TTCGGGAGGATTGGGATGATGCTA-3'; reverse primer of 2-N, 5'-GCGGTACCTCAACCACCACTGG TGGAAGG-3'; forward primer of 2-C, 5'-CCG AATTCGGTCTGGCTATAAGAATAACG A-3'.

Coding regions of human *c-Jun* (NM\_002228), *c-Fos* (NM\_005252), and *CREB* (NM\_004379) were amplified from a human brain cDNA library, and cloned in frame with the Gal4-DNA binding domain into *EcoRI* and *SalI* sites of pCMV-BD (Stratagene). Primers are: c-Jun forward, 5'-CGGAATTCATGACTGCAAAGATGGA-3'; c-Jun reverse, 5'-GCGTCGACCTCAAATGTTTGCAA C-3'; c-Fos forward, 5'-CGGAATTCATGATGTTCT CGGGCTTCAA-3'; c-Fos reverse, 5'-GCGTCGACGT CACAGGGCCAGCAGCG-3'; CREB forward, 5'-C GGAATTCATGACCATGGAATCTGG-3'; CREB reverse, 5'-GCGTCGACGTTAATCTGATTTGTGG-3'. All the above constructs were confirmed by DNA sequencing.

### Northern blot

Human multiple-tissue northern blot was performed as described previously [19] using  $\alpha$ -<sup>32</sup>P-ATP labeled full-length human *ZCCHC12* as probe (Clontech). Briefly, the blot was prehybridized at 65°C for 2 h in 10× Denhardt's solution containing 2× saline sodium citrate (SSC), 1% SDS, and 100 µg/ml salmon sperm DNA, and then hybridized with the labeled *ZCCHC12* probe at 65°C overnight in the solution containing 50% formamide, 2× SSC, 1% SDS, and 100 µg/ml salmon sperm DNA. After hybridization, the membrane was washed twice in 2× SSC and 1% SDS at room temperature for

30 min, twice in  $1 \times$  SSC and 0.5% SDS at  $65^{\circ}\text{C}$  for 40 min, and once in  $0.1 \times$  SSC and 0.1% SDS at  $65^{\circ}\text{C}$  for 40 min. The stripped membrane was reprobed with  $\alpha$ - $^{32}\text{P}$ -ATP labeled  $\beta$ -actin for loading control. Film (Kodak, Vancouver, WA, USA) was exposed at  $-80^{\circ}\text{C}$  overnight.

### Quantitative RT-PCR

Total RNA was isolated from various cell lines using TRIzol reagent (Invitrogen), and treated with RNase-free DNase to remove chromosomal DNA contamination. Subsequently, the cDNAs were synthesized according to the manufacturer's instruction (Qiagen, Valencia, CA, USA). PCR amplification was performed using the following primers: ZCCHC12-sense, 5'-ATCATTGCA CGTGTCGGTAACA-3'; ZCCHC12-antisense, 5'-TGG CCATTATAGGACCGAGACTT-3';  $\beta$ -actin-sense, 5'-A GAGCTACGAGCTGCCTGAC-3';  $\beta$ -actin-antisense, 5'-AGCACTGTGTTGGCGTACAG-3'. PCR conditions for 30 cycles were:  $94^{\circ}\text{C}$  for 30 s,  $60^{\circ}\text{C}$  for 30 s, and  $72^{\circ}\text{C}$  for 30 s. The PCR products of ZCCHC12 and  $\beta$ -actin were 105 and 183 bp, respectively. The expression of ZCCHC12 was normalized by the expression of  $\beta$ -actin.

### Whole-mount *in situ* hybridization

Anti-sense and sense RNA probes, labeled with digoxigenin-UTP (Roche, Mannheim, Germany), were generated according to the manufacturer's instruction by *in vitro* transcription of linearized pBluescript II KS-ZCCHC12 with T7 or T3 RNA polymerase (Roche). For *in situ* hybridization, mouse embryos of E10.5 were dissected and fixed in 4% paraformaldehyde (PFA)/PBS at  $4^{\circ}\text{C}$  overnight. After washing twice with diethylpyrocarbonate (DEPC) treated PBS containing 0.1% Tween-20 (PBST) for 10 min each, the mouse embryos were serially dehydrated in 25%, 50%, 75% methanol/DEPC-PBST, and twice in 100% methanol, then bleached with methanol containing 6% hydrogen peroxide for 1 h, and washed twice with PBST for 15 min each. Afterwards, the samples were treated with 100  $\mu\text{g}/\text{ml}$  proteinase K (Sigma, St Louis, MO, USA) in PBST for 15 min at room temperature, refixed with 0.2% glutaraldehyde/4% PFA in PBST for 20 min, and washed twice with DEPC/PBST for 15 min each. Next, the embryos were subjected to hybridization with digoxigenin riboprobes, antibody incubation, and subsequent washes. Hybridized RNA probes were detected by alkaline phosphatase-conjugated anti-digoxigenin antibody (1:5000), and alkaline phosphatase staining was

performed with NBT/BCIP solution. Finally, the embryos were photographed under a dissecting microscope (Carl Zeiss, Oberkochen, Germany).

### Cell culture and transfection

HeLa, SK-N-SH, and A172 cells were obtained from ATCC (Rockville, IN, USA). HeLa cells were cultured in DMEM (Gibco, Rockville, IN, USA) supplemented with 10% fetal calf serum (Gibco), 100 U/ml penicillin, and 100  $\mu\text{g}/\text{ml}$  streptomycin; HEK293FT cells were cultured according to a standard protocol (Invitrogen); human neuroblastoma SK-N-SH cells were cultured in EMEM (Gibco) supplemented with 10% fetal calf serum and 0.1 mM non-essential amino acids (Gibco); and human glioblastoma A172 cells were cultured in DMEM supplemented with 10% fetal calf serum and 4 mM glutamine. All cells were incubated in a humidified atmosphere at  $37^{\circ}\text{C}$  with 5%  $\text{CO}_2$ . HeLa, SK-N-SH, and A172 cells were transfected using Lipofectamine<sup>TM</sup> 2000 according to the manufacturer's instructions (Invitrogen), and HEK293FT cells were transfected using routine calcium phosphate precipitation method [20]. Cells were used for further study 48 h after transfection.

### Immunofluorescent staining

Cells cultured on glass coverslips were fixed with 4% PFA/PBS. Immunofluorescent staining of full-length and truncated human ZCCHC12 was performed as described previously [21]. Rabbit polyclonal anti-Myc antibody (Sigma) and Alexa Fluor<sup>®</sup> 488 goat anti-rabbit antibody (Invitrogen) were used as primary (1:1000) and secondary antibody (1:1000), respectively. Hoechst 33258 (Sigma) was used to stain the nuclei. Fluorescent signals were analyzed using a fluorescence microscope (Carl Zeiss).

### Luciferase reporter assays

Reporter plasmids pAP1-Luc and pCRE-Luc (Clontech) contain multiple copies of AP-1 response element and cAMP response element fused TATA-like promoter region, respectively. They were used to investigate the potential roles of human ZCCHC12 in the regulation of transcription factors AP-1 and CREB in HeLa and HEK293FT cells. For the GAL4-based transcription regulatory assays, HEK293FT cells were transiently transfected with pL8G5-Luc reporter and other indicated vectors. The luciferase activity assay was performed using luciferase assay system (Promega, Madison, WI, USA) according to the manufacturer's instruction. Relative luciferase activities were normalized with

transfection efficiency through co-transfection with pCMV-LacZ and spectrophotometry analysis. Each experiment was performed in triplicate.

**Co-immunoprecipitation**

HEK293FT cells were transfected with pCMV-Myc-ZCCHC12. Twenty-four hours later, cells were harvested and lysed in RIPA buffer [50 mM Tris-HCl (pH 7.2), 150 mM NaCl, 1% (v/v) Triton X-100, 1% (w/v) sodium deoxycholate, and 0.1% (w/v) SDS] with protease inhibitors. Immunoprecipitation was performed using mouse monoclonal anti-Myc antibody (Santa Cruz Biotech, Santa Cruz, CA, USA) or pre-immune serum (negative control). Co-precipitated proteins were subjected to electrophoresis on 10% SDS-polyacrylamide gel, and then analyzed by western blot analysis using 1:200 dilution of rabbit polyclonal anti-c-Jun antibody (Santa Cruz Biotech). The immunoprecipitated Myc-ZCCHC12 was detected using anti-Myc polyclonal antibody (Sigma) after stripping the membrane with

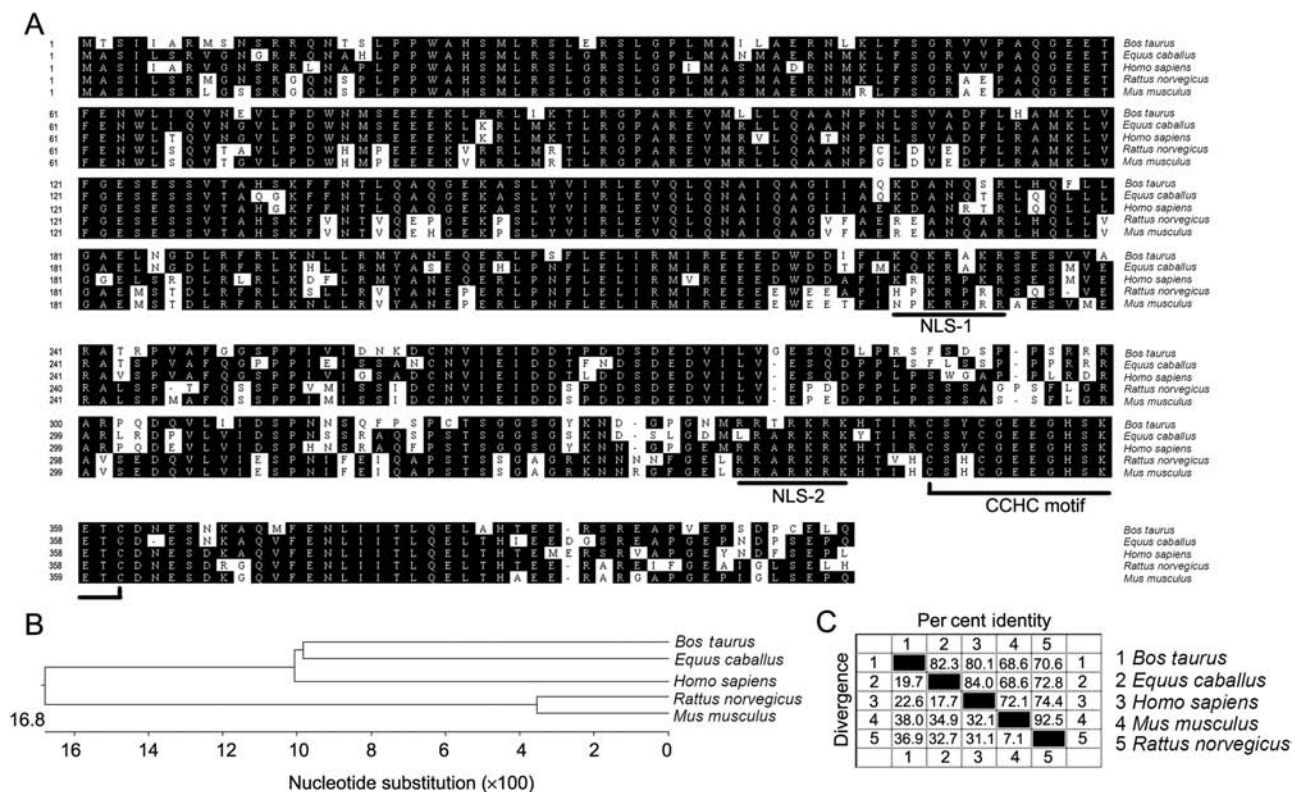
Restore™ Western blot Stripping Buffer (Pierce, Rockford, IL, USA).

**Results**

**Cloning and sequence analysis of ZCCHC12**

The full-length human ZCCHC12 was isolated by RT-PCR from a human brain cDNA library, and comparative sequence analysis was performed based on the information published in NCBI human genome database (<http://www.ncbi.nlm.nih.gov/sites/entrez?db=gene&cmd=search&term=ZCCHC12>). Human ZCCHC12 gene locates on chromosome Xq24 and contains four exons encoding 402 amino acids with a predicted molecular mass of 45.4 kDa. This protein contains one typical Cys-X2-Cys-X4-His-X4-Cys (CCHC) type zinc finger motif in the C-terminal and two NLSs [Fig. 1(A)], and it does not contain any other identified motifs or domains.

Up to now, only three ZCCHC12 sequences (*H. sapiens*, *R. norvegicus*, and *M. musculus*) and two predicted ZCCHC12 sequences (*B. taurus* and *E.*



**Figure 1** Sequence analysis of ZCCHC12 (A) Alignment analysis of amino acid sequences of ZCCHC12 from *B. taurus*, *E. caballus*, *H. sapiens*, *M. musculus*, and *R. norvegicus*. Identical amino acid residues were shaded dark, and gaps between amino acids were filled with dashes. CCHC zinc finger motif and NLS were underlined. (B) The evolutionary relationship among these five ZCCHC12 proteins was shown by phylogenetic tree analysis. (C) The identity percentage between any two ZCCHC12 proteins from different species.

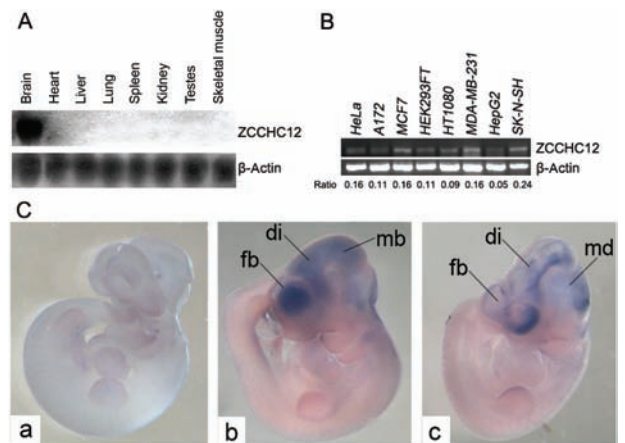
*caballus*) have been reported in NCBI database. Using the DNASTar program, these five *ZCCHC12* genes were aligned [Fig. 1(A)]. An evolutionary relationship among these proteins was also examined by phylogenetic tree analysis [Fig. 1(B)]. The identity percentage between any two *ZCCHC12* proteins from different species was shown in Fig. 1(C). *ZCCHC12* protein of *H. sapiens* shares 74.4% identity with that of *M. musculus*, and 84% identity with that of *E. caballus*. Although sequences of *ZCCHC12* from other species are unavailable yet, it seems that *ZCCHC12* could be conserved. No homologous genes were found in genomes of bacteria, fungi, plants, invertebrate, and even vertebrate such as *Danio rerio*, suggesting that *ZCCHC12* may specifically express in higher animal.

### Expression profile analysis of *ZCCHC12*

To examine the tissue expression profile of human *ZCCHC12*, human multiple-tissue northern blot analysis was performed and the result was shown in Fig. 2(A). A 2.4 kb transcript responsible for *ZCCHC12* strongly expressed in human brain, but no signals were detected in heart, liver, lung, spleen, kidney, testis, and skeletal muscle, indicating that *ZCCHC12* is mainly present in human brain.

The expression of *ZCCHC12* in various human cell lines was also tested by quantitative RT-PCR analysis. As shown in Fig. 2(B), human *ZCCHC12* was expressed not only in brain-derived cell lines but also in other tissue-derived cell lines. The expression of *ZCCHC12* was relatively high in neuroblastoma SK-N-SH cell, moderate in glioblastoma A172 cell and other tissue-derived cells (cervical carcinoma HeLa cells, breast cancer MCF7 and MDA-MB-231 cells, permanent embryonal kidney HEK293FT cells, and fibrosarcoma HT1080 cells), and low in hepatocellular carcinoma HepG2 cell. *ZCCHC12* as a brain-specific gene was expressed in many other tissue-derived tumor cell lines, implying that *ZCCHC12* may be related to tumorigenesis.

To further check the expression pattern of *ZCCHC12* in embryos, the RNA whole-mount *in situ* hybridization of E10.5 mouse embryos was carried out. Strong signals were detected in neuroepithelium of forebrain, midbrain, and diencephalon [b and c in Fig. 2(C)] using anti-sense *ZCCHC12* RNA as a probe, whereas the negative control (corresponding sense probe) did not give out any signal [a in Fig. 2(C)]. This again demonstrated that *ZCCHC12* plays a role in the brain development during early embryogenesis.

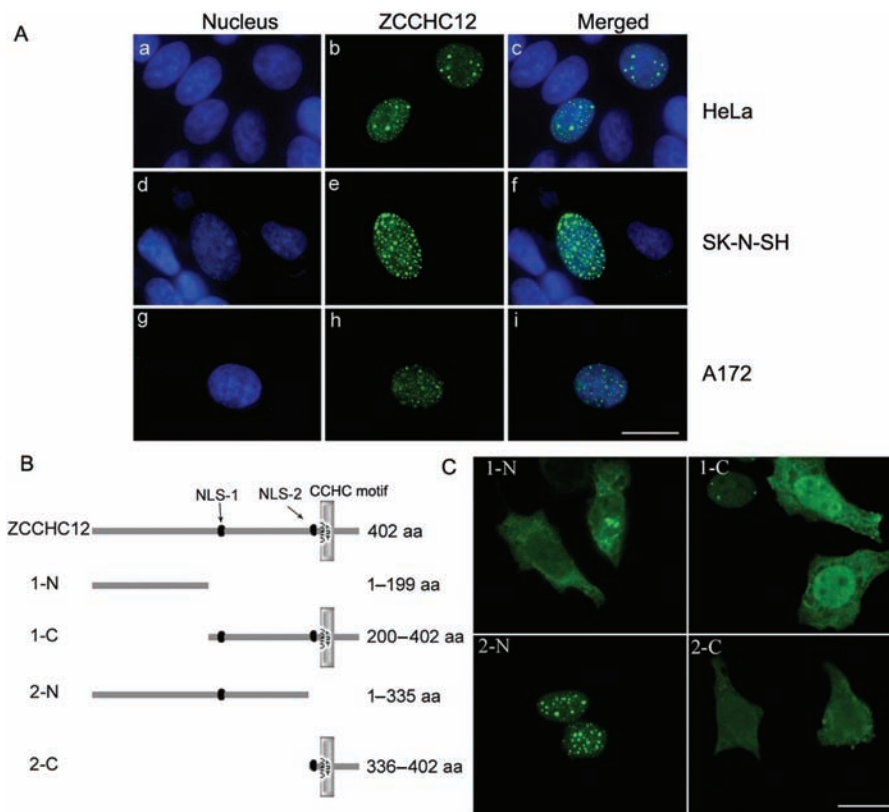


**Figure 2** Expression profile of *ZCCHC12* (A) Multiple-tissue northern blot analysis of human *ZCCHC12* mRNAs. The membrane was probed with  $\alpha$ - $^{32}$ P-ATP-labeled human *ZCCHC12* cDNA (top), and stripped and re-probed with  $\alpha$ - $^{32}$ P-ATP-labeled  $\beta$ -actin cDNA probe for loading control (bottom). A 2.4 kb transcript of *ZCCHC12* was only detected in brain. (B) Quantitative RT-PCR analysis of *ZCCHC12* transcript in various human cell lines. The gel was representative of three independent experiments.  $\beta$ -Actin (bottom) was used to verify equal loadings, and densitometric analysis of *ZCCHC12*/ $\beta$ -actin ratios was performed with Gel-Pro Analyzer 4.0 software. (C) Whole-mount *in situ* hybridization of *ZCCHC12* mRNAs in E10.5 mouse embryos. a, embryos hybridized with negative control sense probe, no signal was detected. b and c, embryos hybridized with antisense probe, strong signals were detected in neuroepithelium of forebrain (fb), midbrain (mb), and diencephalon brain (di).

### *ZCCHC12* is a nuclear protein and activates the transcriptional activities of AP-1 and CREB

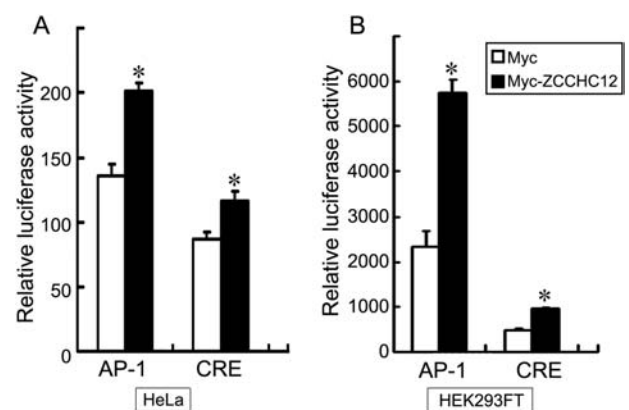
As human *ZCCHC12* contains two putative NLSs, to examine if it localizes in the nuclei, expression vector pCMV-Myc-*ZCCHC12* was transfected into HeLa, SK-N-SH, and A172 cells. Immunofluorescent staining in Fig. 3(A) showed a nuclear punctate distribution of *ZCCHC12* in HeLa (a–c), SK-N-SH (d–f), and A172 (g–i) cells. This implies that *ZCCHC12* is a nuclear protein, and probably bind to chromatin and activate transcription of target genes [22].

To identify which putative NLS directs the nuclear localization, four truncated *ZCCHC12* were constructed [Fig. 3(B)]. Immunofluorescent staining of HeLa cells transfected with the truncated form of 2-N showed very clear nuclear foci similar to the full-length *ZCCHC12* protein [Fig. 3(C)]. However, truncated forms of 1-N, 1-C, and 2-C were found to spread in the entire cell. 1-C localized predominantly within the nucleus with very few foci; in contrast, 1-N and 2-C localized predominantly in the cell cytoplasm. The results indicated that



the first NLS and the N-terminal of ZCCHC12 are necessary for its nuclear localization.

To investigate the role of human ZCCHC12 in the nuclei, we examined its effects on regulation of AP-1 and CREB signal pathways in HeLa cells. When pAP1-Luc or pCRE-Luc was cotransfected with pCMV-Myc-ZCCHC12 in HeLa cells, the relative luciferase activities were statistically significantly up-regulated compared with vector control [Fig. 4(A)]. Luciferase reporter assays of ZCCHC12 truncated forms showed that 2-N activated AP-1 and CREB signaling pathways most significantly, which is consistent with the punctate nuclear distribution (data not shown). To exclude the cell-specific effects, the experiment was also performed in HEK293FT cell line. As shown in Fig. 4(B), similar results were obtained. These results indicated that ZCCHC12 activates the transcriptional activities of AP-1 and CREB.



**Figure 4** ZCCHC12 activates the transcriptional activities of AP-1 and CREB (A) Luciferase reporter vectors (pAP1-Luc or pCRE-Luc) were co-transfected with pCMV-Myc-ZCCHC12 or pCMV-Myc into HeLa cells. Forty-eight hours later, cell lysates were subjected to luciferase assay. (B) The same experiment was performed in HEK293FT cells. Statistical comparisons were determined using t-test. \*P < 0.05 compared with the respective vector control.

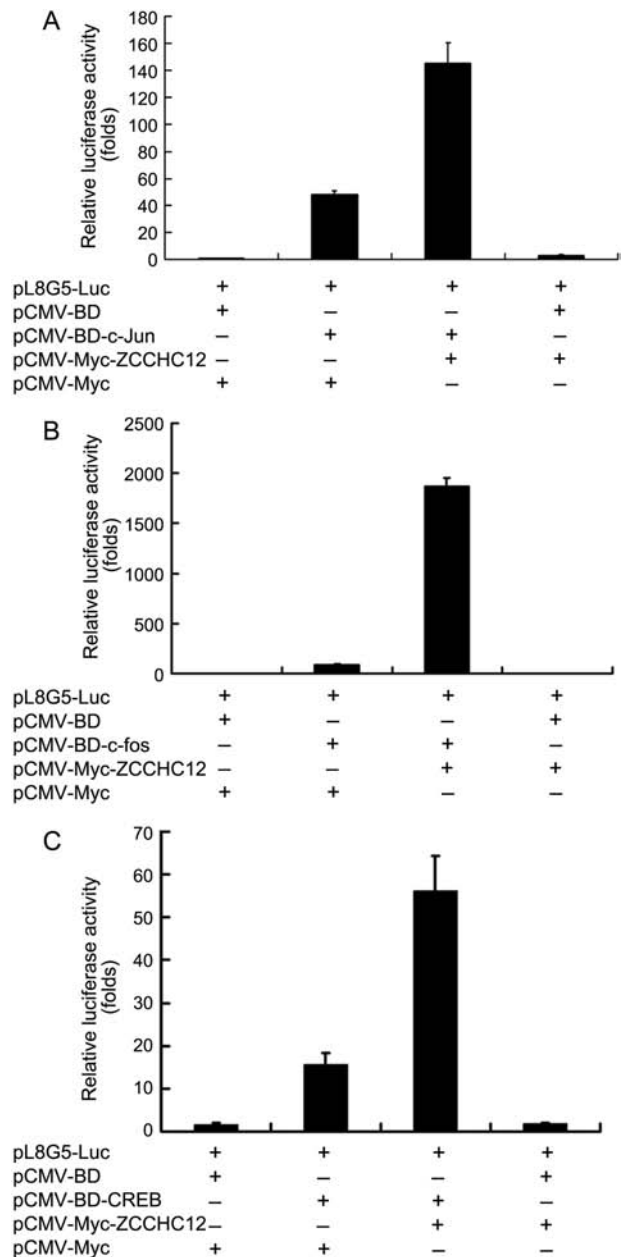
### ZCCHC12 functions as a transcriptional co-activator of AP-1 and CREB, and interacts with c-Jun

To verify the mechanism of ZCCHC12 regulating the transcriptional activities of AP-1 and CREB, GAL4-based transcription regulatory assays were performed. Because transcription factor AP-1 is composed of c-Jun and c-Fos, pGal4DB-c-Jun, pGal4DB-c-Fos, and pGal4DB-CREB were constructed for this purpose. pGal4DB-c-Jun and pL8G5-Luc reporter construct were cotransfected into HEK293FT cells together with pCMV-Myc or pCMV-Myc-ZCCHC12. Only ZCCHC12 overexpression did not enhance the report activity. But as expected, pGal4DB-c-Jun showed strong transactivation of pL8G5-luc reporter [23], and cotransfection of pCMV-Myc-ZCCHC12 with pGal4DB-c-Jun further enhanced the reporter transcriptional activity [Fig. 5(A)]. ZCCHC12 overexpression also strongly increased Gal4DB-c-Fos and Gal4DB-CREB responsive L8G5-Luc reporter gene expression [Fig. 5(B,C)]. These results indicated that ZCCHC12 functions as a transcriptional co-activator of AP-1 and CREB, possibly through interaction with AP-1 and CREB.

To demonstrate the possible interaction between ZCCHC12 and c-Jun in mammalian cells, half endogenous co-immunoprecipitation of these two proteins was performed. First, HEK293FT cells were transiently transfected with expression vector pCMV-Myc-ZCCHC12. Twenty-four hours later, cells were harvested, and the lysates were immunoprecipitated with either control pre-immune serum or anti-Myc antibody. The co-immunoprecipitated proteins were examined for the presence of c-Jun by immunoblotting assay using anti-c-Jun polyclonal antibody. As shown in Fig. 6, c-Jun could be co-immunoprecipitated by Myc tagged ZCCHC12 (lane 2), but not by control pre-immune serum (lane 1). This result demonstrated that ZCCHC12 and c-Jun could be found in the same complex. Considering the punctate distribution of ZCCHC12 in nuclear, we speculate that ZCCHC12 might activate AP-1 through recruiting AP-1 to the transcription sites on the chromatin.

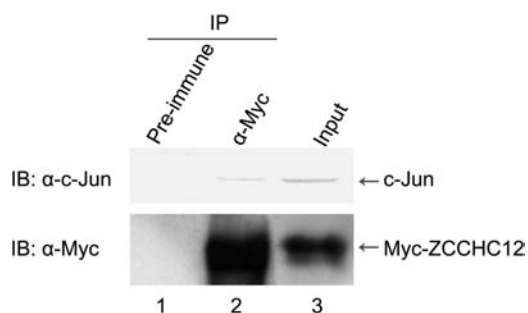
### Discussion

In this study, we independently cloned human ZCCHC12, and did comparative sequence analysis of ZCCHC12 from *M. musculus*, *H. sapiens*, *R. norvegicus*, *B. Taurus*, and *E. caballus* published in NCBI genome database. Previous study has reported one NLS near the



**Figure 5** ZCCHC12 functions as a transcriptional co-activator of AP-1 and CREB (A) ZCCHC12 effectively enhanced c-Jun-mediated transactivation in GAL4-based transcription regulatory assays in HEK293FT cells. The pL8G5-Luc reporter vector was cotransfected with plasmids encoding Gal4-c-Jun, Myc or Myc-ZCCHC12. At 48 h post-transfection, cells were harvested for luciferase assay. (B and C) ZCCHC12 strongly increased c-Fos and CREB-mediated transactivation.

CCHC motif in the C-terminal of mouse ZCCHC12 [13]. Our alignment analysis showed that human ZCCHC12 contains another putative NLS in the middle of the amino acid sequence. Immunofluorescent staining of ZCCHC12 in various human cell lines revealed its



**Figure 6** ZCCHC12 interacts with c-Jun in HEK293FT cells Cell lysates (800  $\mu\text{g}$ ) of HEK293FT cells transfected with expression vector pCMV-Myc-ZCCHC12 was precipitated with anti-Myc antibody for detection of c-Jun (lane 2). Immunoprecipitates with pre-immune serum were used as negative control (lane 1). A total of 50  $\mu\text{g}$  of cell extract were used as positive control (lane 3, input). The co-immunoprecipitated c-Jun and the expression of c-Jun in cell extract were detected by anti-c-Jun polyclonal antibody. The immunoprecipitated Myc-ZCCHC12 and the expression of Myc-ZCCHC12 in cell extract were detected by anti-Myc polyclonal antibody. IP, immunoprecipitation; IB, immunoblot.

nuclear punctate distribution. Protein truncation assay further indicated that the newly identified NLS was responsible for the nuclear localization. However, without the N-terminal, human ZCCHC12 localized predominantly within the nucleus only with very few foci, which implies that some other nuclear proteins might help to recruit ZCCHC12 onto chromatin through binding its N-terminal. Informatics analysis of human ZCCHC12 could not characterize any other identified protein domains or motifs. More experiments might be required for elucidating this issue.

Similar to mouse ZCCHC12, human ZCCHC12 was demonstrated by multiple-tissue northern blot assay to highly and specifically express in the brain. Yet, quantitative RT-PCR experiments detected ZCCHC12 not only from brain-derived cell lines (SK-N-SH and A172) but also from other tissue-derived cell lines (HeLa, MCF7, MDA-MB-231, HEK293FT, HT1080, and HepG2). Because DNA methylation plays a key role in the regulation of gene expression in specific tissues and tumor cells [24], we used online software Methylator (<http://www.bioinfo.tsinghua.edu.cn/~tigerchen/memo/form.html>) to predict methylation sites and found many potential methylation sites present in the promoter region of ZCCHC12. Therefore, we speculate that expression of ZCCHC12 in other tissue-derived cell lines is possibly caused by alteration of DNA methylation in ZCCHC12 promoter region. Furthermore, as most of these cell lines are from tumor patients, even HEK293FT cell is also from transformed human embryonic kidney, ZCCHC12

detection in these cell lines implied that it may play important roles during tumorigenesis. In addition, the expression of ZCCHC12 was relatively higher in neuroblastoma SK-N-SH cell than in glioblastoma A172 cell, suggesting that ZCCHC12 expressed stronger in neurons than in glia cells.

Originally, mouse ZCCHC12 was identified from a regulator screen of dorsal-ventral patterning in forebrain of mouse early embryos, and the expression of ZCCHC12 in E12.5 and E14.5 mice was restricted to the ventral forebrain [12]. However, our whole-mount *in situ* hybridization of mouse E10.5 embryo indicated that ZCCHC12 was expressed in forebrain, midbrain, and diencephalon regions. The differences of the expression pattern of mouse ZCCHC12 in the brain between E10.5 and E12.5 mice may be due to the different development stages. Moreover, microarray expression data indicated that in E16 and E18 brain, mouse ZCCHC12 expressed stronger in a thin layer of cells in the lower cortical plate of the cingulate cortex than in septum, striatum, diencephalons, and amygdale [25]. Taking together, the expression pattern of ZCCHC12 in brain is a timing event and developmentally regulated.

AP-1 and CREB are two important transcription factors. AP-1 regulates a wide range of cellular processes, including cell proliferation, death, survival, and differentiation [26]. CREB is a key mediator of stimuli-induced nuclear responses underlaid the development, function, and plasticity of the nervous system, and it is critical for synaptic function in neurons [16]. Mouse ZCCHC12 has been reported to activate BMP signaling by interacting with Smad1 and associating with CBP [12]. CBP has intrinsic histone acetyltransferase activity, and can interact with components of the basal transcription machinery and a variety of different DNA-binding factors to activate the transcription [27,28]. In addition, CBP is proven to be the co-activator and binding partner for AP-1 [29] and CREB [30,31]. Since human ZCCHC12 shares 74.4% identity with mouse ZCCHC12, analogously, human ZCCHC12 could be possibly associated with CBP too. In this study, we demonstrated that human ZCCHC12 acted as a co-activator, and positively regulated the transcriptional activity of AP-1 and CREB. Considering that ZCCHC12 expresses at high level in neurons, activates CREB signaling pathways, and is a candidate gene of X-linked mental retardation [13] or responsible for Orphan Parkinson loci [32], ZCCHC12 is probably involved in the long-term potentiation of neurons.

In conclusion, we characterized human ZCCHC12 as a nuclear protein, specifically expressed in human brain

and mouse embryonic brain, functioned as a positive modulator of AP-1 and CREB signal. Moreover, we found a novel NLS in human ZCCHC12 necessary for the nuclear localization and punctate distribution. ZCCHC12 can bind to c-Jun to activate AP-1 transcription. However, the regulation mechanism of CREB by ZCCHC12 still needs further investigation in the future. The roles of *ZCCHC12* played in brain development also need to be defined.

## Acknowledgements

We thank all members of the Lab of Gene Function and Regulation, College of Life Sciences in Hunan Normal University, for their helpful discussion.

## Funding

This work was supported in part by the 973 project of the Ministry of Science and Technology of China (2005CB522505, 2006CB943506, and 2008CB517306), the National Natural Science Foundation of China (30500258), and the Science and Technology Department of Hunan Province (07JJ3075 and 2007CK3052).

## References

- 1 Laity JH, Lee BM and Wright PE. Zinc finger proteins: new insights into structural and functional diversity. *Curr Opin Struct Biol* 2001, 11: 39–46.
- 2 Krishna SS, Majumdar I and Grishin NV. Structural classification of zinc fingers: survey and summary. *Nucleic Acids Res* 2003, 31: 532–550.
- 3 Wang H, Sun R, Liu G, Yao M, Fei J and Shen H. Characterization of the target DNA sequence for the DNA-binding domain of zinc finger protein 191. *Acta Biochim Biophys Sin* 2008, 40: 704–710.
- 4 Summers MF, Henderson LE, Chance MR, Bess JW, South TL, Blake PR and Sagi I, *et al.* Nucleocapsid zinc fingers detected in retroviruses: EXAFS studies of intact viruses and the solution-state structure of the nucleocapsid protein from HIV-1. *Protein Sci* 1992, 1: 563–574.
- 5 Urbaneja MA, McGrath CF, Kane BP, Henderson LE and Casas-Finet JR. Nucleic acid binding properties of the simian immunodeficiency virus nucleocapsid protein NCp8. *J Biol Chem* 2000, 275: 10394–10404.
- 6 Amodeo P, Castiglione Morelli MA, Ostuni A, Battistuzzi G and Bavoso A. Structural features in EIAV NCp11: a lentivirus nucleocapsid protein with a short linker. *Biochemistry* 2006, 45: 5517–5526.
- 7 Fu W, Prasad VV, Chen J, Nikolaitchik O and Hu WS. Molecular mechanisms of simian immunodeficiency virus SIV(agg) RNA encapsidation. *Virology* 2007, 363: 210–219.
- 8 Rajavashisth TB, Taylor AK, Andalibi A, Svenson KL and Lusic AJ. Identification of a zinc finger protein that binds to the sterol regulatory element. *Science* 1989, 245: 640–643.
- 9 Minoda Y, Saeki K, Aki D, Takaki H, Sanada T, Koga K and Kobayashi T, *et al.* A novel Zinc finger protein, ZCCHC11, interacts with TIFA and modulates TLR signaling. *Biochem Biophys Res Commun* 2006, 344: 1023–1030.
- 10 Zhou AD, Zhou JL, Yang LP, Liu MJ, Li H, Xu S and Han M, *et al.* A nuclear localized protein ZCCHC9 is expressed in cerebral cortex and suppresses the MAPK signal pathway. *J Genet Genomics* 2008, 35: 467–472.
- 11 Gustafson MP, Welcker M, Hwang HC and Clurman BE. Zcchc8 is a glycogen synthase kinase-3 substrate that interacts with RNA-binding proteins. *Biochem Biophys Res Commun* 2005, 338: 1359–1367.
- 12 Cho G, Lim Y, Zand D and Golden JA. Szn1 is a novel protein that functions as a transcriptional coactivator of bone morphogenic protein signaling. *Mol Cell Biol* 2008, 28: 1565–1572.
- 13 Cho G, Bhat SS, Gao J, Collins JS, Rogers RC, Simensen RJ and Schwartz CE, *et al.* Evidence that SIZN1 is a candidate X-linked mental retardation gene. *Am J Med Genet A* 2008, 146A: 2644–2650.
- 14 Renieri A, Pescucci C, Longo I, Ariani F, Mari F and Meloni I. Non-syndromic X-linked mental retardation: from a molecular to a clinical point of view. *J Cell Physiol* 2005, 204: 8–20.
- 15 Pennypacker KR. AP-1 transcription factor complexes in CNS disorders and development. *J Fla Med Assoc* 1995, 82: 551–554.
- 16 Lonze BE and Ginty DD. Function and regulation of CREB family transcription factors in the nervous system. *Neuron* 2002, 35: 605–623.
- 17 Ionescu AM, Drissi H, Schwarz EM, Kato M, Puzas JE, McCance DJ and Rosier RN, *et al.* CREB cooperates with BMP-stimulated Smad signaling to enhance transcription of the Smad6 promoter. *J Cell Physiol* 2003, 198: 428–440.
- 18 Xu RH, Dong ZG, Maeno M, Kim J, Suzuki A, Ueno N and Sredni D, *et al.* Involvement of Ras/Raf/AP-1 in BMP-4 signaling during *Xenopus* embryonic development. *Proc Natl Acad Sci USA* 1996, 93: 834–838.
- 19 Ding XF, Luo C, Ren KQ, Zhang J, Zhou JL, Hu X and Liu RS, *et al.* Characterization and expression of a human KCTD1 gene containing the BTB domain, which mediates transcriptional repression and homomeric interactions. *DNA Cell Biol* 2008, 27: 257–265.
- 20 Ishiura M, Hirose S, Uchida T, Hamada Y, Suzuki Y and Okada Y. Phage particle-mediated gene transfer to cultured mammalian cells. *Mol Cell Biol* 1982, 2: 607–616.
- 21 Ding XF, Fan CZ, Zhou JL, Zhong YL, Liu RS, Ren K and Hu X, *et al.* GAS41 interacts with transcription factor AP-2beta and stimulates AP-2beta-mediated transactivation. *Nucleic Acids Res* 2006, 34: 2570–2578.
- 22 Yano T, Nakamura T, Blechman J, Sorio C, Dang CV, Geiger B and Canaani E. Nuclear punctate distribution of ALL-1 is conferred by distinct elements at the N terminus of the protein. *Proc Natl Acad Sci USA* 1997, 94: 7286–7291.
- 23 Angel P and Karin M. The role of Jun, Fos and the AP-1 complex in cell-proliferation and transformation. *Biochim Biophys Acta* 1991, 1072: 129–157.
- 24 Bhasina M, Zhang H, Reinherza EL and Reche PA. Prediction of methylated CpGs in DNA sequences using a support vector machine. *FEBS Lett* 2005, 579: 4302–4308.
- 25 Muhlfriedel S, Kirsch F, Gruss P, Chowdhury K and Stoykova A. Novel genes differentially expressed in cortical regions during late neurogenesis. *Eur J Neurosci* 2007, 26: 33–50.

- 26 Shaulian E and Karin M. AP-1 as a regulator of cell life and death. *Nat Cell Biol* 2002, 4: E131–E136.
- 27 Janknecht R and Hunter T. Versatile molecular glue. *Transcriptional control. Curr Biol* 1996, 6: 951–954.
- 28 Janknecht R and Hunter T. Transcription. A growing coactivator network. *Nature* 1996, 383: 22–23.
- 29 Bannister AJ and Kouzarides T. CBP-induced stimulation of c-Fos activity is abrogated by E1A. *EMBO J* 1995, 14: 4758–4762.
- 30 Chrivia JC, Kwok RP, Lamb N, Hagiwara M, Montminy MR and Goodman RH. Phosphorylated CREB binds specifically to the nuclear protein CBP. *Nature* 1993, 365: 855–859.
- 31 Kwok RP, Lundblad JR, Chrivia JC, Richards JP, Bachinger HP, Brennan RG and Roberts SG, *et al.* Nuclear protein CBP is a coactivator for the transcription factor CREB. *Nature* 1994, 370: 223–226.
- 32 Gherbassi D, Bhatt L, Thuret S and Simon HH. Merging mouse transcriptome analyses with Parkinson's disease linkage studies. *DNA Res* 2007, 14: 79–89.